

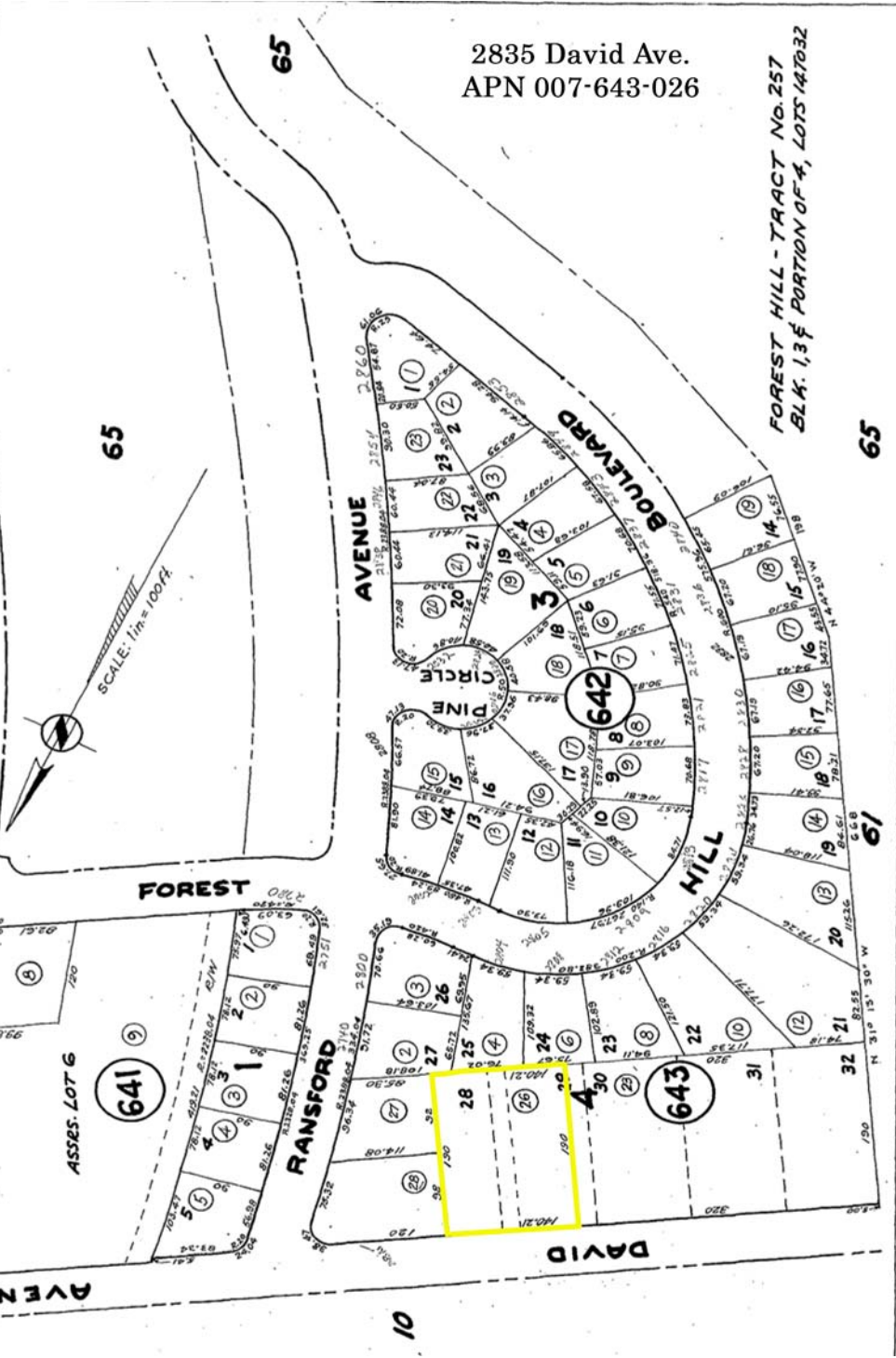
ASSESSOR'S MAP  
BOOK 7 - PAGE 64

TAX CODE AREA 4-02

6-71

CARMEL - PACIFIC GROVE COUNTY ROAD

THIS MAP IS INTENDED TO BE USED FOR  
PROPERTY TAX ASSESSMENT PURPOSES ONLY.



2835 David Ave.  
APN 007-643-026

FOREST HILL - TRACT No. 257  
BLK. 1, 3<sup>d</sup> PORTION OF 4, LOTS 147032

AVENUE

65

65

FOREST

65

AVENUE

10

DAVID

641

642

643

61

65